

Discover
**LINCOLN
PARK**
2011

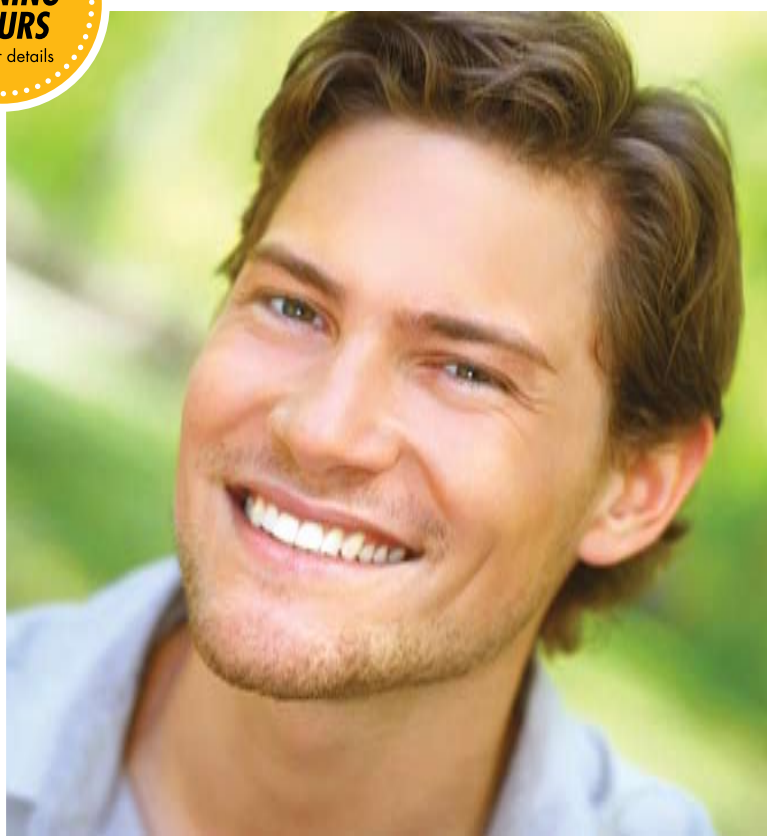


A GUIDE TO SHOPPING, DINING,
ENTERTAINMENT AND SERVICES

www.lincolnparkchamber.com



Lincoln Park Chamber of Commerce
the cornerstone of your success



LIMITED TIME OFFER:

\$129 NEW PATIENT EXAM & CLEANING

VALUE: **\$305** INCLUDES:

- BASIC CLEANING & X-RAYS
- COMPREHENSIVE EXAM
- ORAL CANCER EXAM

NEW EVENING HOURS
call for details

We believe your smile brings out the best in you and in those around you. We hope this special introductory offer will give you plenty to smile about.

773.904.2510

Call today to schedule your appointment.

1170 West Armitage Ave.
Chicago, Illinois
www.westenddental.com



Find us on Facebook

*NO CASH VALUE. MUST PRESENT THIS AD TO RECEIVE DISCOUNT. Limited to first treatment for new patients. Not valid with other offers.

welcome.

We're ALDI. We live by one very simple philosophy. Honest to goodness savings. That means over 1,000 quality grocery and produce items at unbelievably low prices. We're just a neighborhood store, with all the stuff real families eat lots of. Come on in and give us a try. If you are not completely satisfied, we will not only refund your purchase but also replace it free of charge.



Enjoy. Extended hours at your local Lincoln Park ALDI, located on Clybourn between Sheffield & Racine. (Below Trader Joe's)

**Monday - Sunday;
9 am - 9 pm**



honest to goodness savings



WELCOME FROM THE LPCC

Welcome to Lincoln Park – the quintessential Chicago neighborhood! Where world-class shopping, dining and cultural activities meet the city’s best schools, outdoor spaces and views, Lincoln Park represents historical character, business success and contemporary style.

One of Lincoln Park’s greatest traits lies in its location. Close to downtown and along the shores of Lake Michigan, this location enables Lincoln Park residents – and Chicago visitors – the best possible experience in the neighborhood and City. Easy access via public transportation, tree-lined streets, expressways, Lake Shore Drive and Chicago’s Lakefront Trail works to establish Lincoln Park as a destination for families, travelers and businesses alike.

Discover Lincoln Park 2011 is a comprehensive guide to one of Chicago’s greatest neighborhoods. In addition to our complete Membership Directory – featuring approximately 500 members from a variety of fields – Discover Lincoln Park includes valuable information on key neighborhood assets from parking and public transportation to cultural institutions, nightlife and other entertainment.

Thank you for continuing to make Lincoln Park a truly magnificent Chicago neighborhood!



Kim Schilf
Kim Schilf, IOM, ACE
LPCC President and CEO



Christine Ramsey
Christine Ramsey
2011 LPCC Board Chairman

At the LPCC we strive to create strong, lasting connections with members of the local business community and their customers, peers, competitors, neighborhood residents, tourists and more. This is our mantra. While our mission states that we “serve as a catalyst for business success and economic development in Lincoln Park” we recognize that our responsibility to the neighborhood is greater than that.

The LPCC is an active partner with many neighborhood organizations and sits on committees discussing key changes to the face of the Lincoln Park neighborhood and the day-to-day operations of our many anchor institutions. We work closely with local elected officials and City of Chicago staffers on behalf of the Lincoln Park neighborhood, its businesses and its reputation.

I would like to issue a call to action: If you see a particularly intriguing business within the pages of our Discover Lincoln Park 2011 guide, give us a call. We can give you a background on the business and work to connect you with their leadership. We’re about business at the LPCC, but we’re also passionate about the Lincoln Park neighborhood.

Let us help you strengthen the neighborhood through the power of relationships.

TABLE OF CONTENTS

INTRODUCTION

- 4 Welcome from the LPCC
- 6 LPCC Mission and Initiatives
- 7 The LPCC Online

MAPS

- 8 Lincoln Park Map
- 10 Aldermanic Ward Map, Illinois Legislative District Map
- 11 Neighborhood Association Map, Police District Map

FOR VISITORS

- 12 Enjoying the Area — Cultural Institutions
- 14 Enjoying the Area — Theaters & Music Venues
- 15 Enjoying the Area — Parks & Outdoor Recreation
- 16 Lincoln Park Dining Guide
- 18 Directions to Lincoln Park
- 19 Moving to the Neighborhood

FOR RESIDENTS

- 21 Education — Lincoln Park Area Schools & DePaul University
- 23 Getting Around — Parking & Public Transportation
- 24 Government Contact Information
- 25 Public Contact Information
- 26 Health Care
- 27 Worship Centers
- 28 Community Involvement

FOR BUSINESSES

- 29 LPCC Member Benefits
- 30 LPCC Member FAQs & Event FAQs
- 31 Special Service Areas, Government Relations & Community Affairs, Contact Information
- 32 2011 LPCC Board of Directors

BUSINESS LISTINGS & INDEX

- 33 LPCC 2011 Categorical Business Listing
- 48 Business Index
- 50 Business Listing Categorical Index
- 51 Advertiser Index



Daily Herald

Created and produced by NICHE Publications, a division of Daily Herald, for the Lincoln Park Chamber of Commerce



Kim Schilf President and CEO, LPCC
Padraic Swanton Director of Marketing and Communications, LPCC

Every effort has been made to ensure the accuracy of the information in this publication. The Lincoln Park Chamber of Commerce and NICHE Publications, a division of Daily Herald, assume no responsibility for misinformation. Contact the Lincoln Park Chamber of Commerce with any additions or corrections. Reproduction in whole or in part without permission from the Lincoln Park Chamber of Commerce and NICHE Publications is prohibited.



Advanced treatment of varicose, reticular and spider veins without surgery

HEALTH AND BEAUTY REDEFINED IN THE HANDS OF EXCELLENCE

Services include:

- Varicose Vein Treatment Using
- Endovenous Laser Ablation (EVLA) • Ultrasound-guided Sclerotherapy
- Ambulatory Phlebectomy • Cosmetic Sclerotherapy

If left untreated, you can experience aches and pains, develop swelling, ulcers, blood clots, skin discoloration, itching and burning sensations.

Please Call
1-866-5MY-VEIN (1-866-569-8346)
for a FREE Consultation.
4906 North Western Avenue
Chicago, IL 60625
www.chicagoveininstitute.com
Check out our blog: www.veinclinicchicago.com



Dr. Mensur O. Sunje

- Board Certified Phlebologist
- Member of American College of Phlebology
- Member of American Medical Association
- Member of the Societe Francaise de Phlebologie
- Member of the European Venous Forum



Thank you to our 2011 Gold Sponsors:



LPCC MISSION AND INITIATIVES

LINCOLN PARK CHAMBER OF COMMERCE

1925 N. Clybourn, Suite 301
Chicago, IL 60614 • (773) 880-5200
www.lincolnparkchamber.com

The Lincoln Park Chamber of Commerce (LPCC) was founded in 1947 to serve as a resource, leader and champion for businesses while serving as an incubator for economic development in the area. The largest neighborhood-based chamber with approximately 500 members, the LPCC is a 501 (c) 6 non profit organization comprised of businesses, institutions and professionals. LPCC members work to support the surrounding Lincoln Park business community and the LPCC's belief is that business prosperity contributes to the vitality of the entire neighborhood.

LPCC MISSION

To serve as a catalyst for business success and economic development in Lincoln Park, we:

- 1) Promote and champion our members
- 2) Advocate for our members with City, County and State governments
- 3) Connect our members to each other and to valued programs and services
- 4) Educate our members on strategies for business success

GOAL STATEMENT

LPCC wants to be best in Chicago at facilitating powerful and meaningful connections for our members.

LPCC'S CORE VALUES

- 1) Relationships 2) Advocacy 3) Integrity 4) Innovation

PROJECTS AND INITIATIVES

The LPCC works to be both a leader and resource to support the business community and surrounding Lincoln Park neighborhood. To achieve this goal, the LPCC organizes various programs and dozens of events that connect members to the services and businesses they need to succeed. These programs are ever-changing and provide our members with the tools and customers they need to maintain and grow their business.

Most importantly, the LPCC is a key resource businesses need to ensure their success. Whether it's developing brand awareness through ribbon-cutting ceremonies, advertising opportunities and sponsorship packages or forging connections with business owners at networking events, New Member Orientations or through our online database, the LPCC is here to serve our members.

The LPCC works closely with local elected officials and community organizations to ensure the voice of local businesses is heard during new policy or development discussions. We share vital legislative news with our membership and our Government Affairs Committee engages in advocacy efforts including letter writing campaigns, City Hall testimony and research.

LPCC members, and the surrounding community, use the materials regularly provided by the LPCC and consider them a valuable resource. Our website, E-Newsletter, The Source, Discover Lincoln Park 2011 and other resources provide information for residents, businesses, and visitors throughout the year. While new residents and visitors to Lincoln Park use the LPCC's maps and public transportation, parking and relocation resources as a guide to the community, neighborhood veterans take advantage of these materials to stay connected to new events and opportunities in the area.

THE LPCC ONLINE

WWW.LINCOLNPARKCHAMBER.COM

Interested in details on neighborhood festivals and events?
Trying to find out more about what makes Lincoln Park the great community it is today?
Need a local product or service?
Discover Lincoln Park today!

DIRECTORY LISTINGS

The LPCC's website features a directory of all of our members organized by both category and alphabetically for easy access. Our website directory is ever-changing as members join the LPCC weekly. This is the most up-to-date listing of our members at any time.

MEMBER NEWS

Lincoln Park is a community that always has a buzz to it. Hundreds of entertainment options keep residents and visitors to the neighborhood busy throughout the year. Lincoln Park's business owners are some of the most respected in Chicago. How do you keep track of it all? Through the LPCC website's Member News section.

For members, the Member News section is the place to share stories about recent media coverage, awards, special events, anniversaries, relocations, expansions and groundbreakings.

Check out what's happening in the Lincoln Park business community today!



HOT DEALS

Looking to save money or try out a new location in the Lincoln Park area? Have a business that can save through discounts at dozens of local organizations? Visit the Hot Deals page on our website to see discounts offered by members of the LPCC. Hot Deals range from discounts on dinner and massages to sales on business and home solutions.

Visit www.lincolnparkchamber.com for the most up-to-date information on dozens of topics and history on the Lincoln Park neighborhood.

SOCIAL NETWORKING

The LPCC is active on many social networking sites to promote the Lincoln Park community, local businesses and more. Connect with us today!

Be sure to check out the LPCC on the following social networking sites:





Lincoln Park Market



Lincoln Park Market is more than your typical neighborhood store. Operated by Bruce Longanecker and his son, Bruce Jr, LPM provides a large selection of your favorite groceries as well as hardware and housewares at affordable prices. LPM also offers many additional services including catering, a post office, a bank, grocery delivery, CTA bus passes, lottery tickets, phone cards, key cutting and more. If you have any other needs please contact us.



Bruce Longanecker and his son, Bruce Jr.













2500 N. Clark || Chicago IL 60614 || 773-477-9372
www.lincolnparkmarket.com



2506 N Clark
Chicago, IL 60614

M-F 9am - 7pm
Sat 9am - 5pm

P: 773-935-7755
F: 773-935-0075

www.theupsstore.com
store1053@theupsstore.com

Business Services
The UPS Store™

**“The one-stop agency,
for *any* insurance need.”**

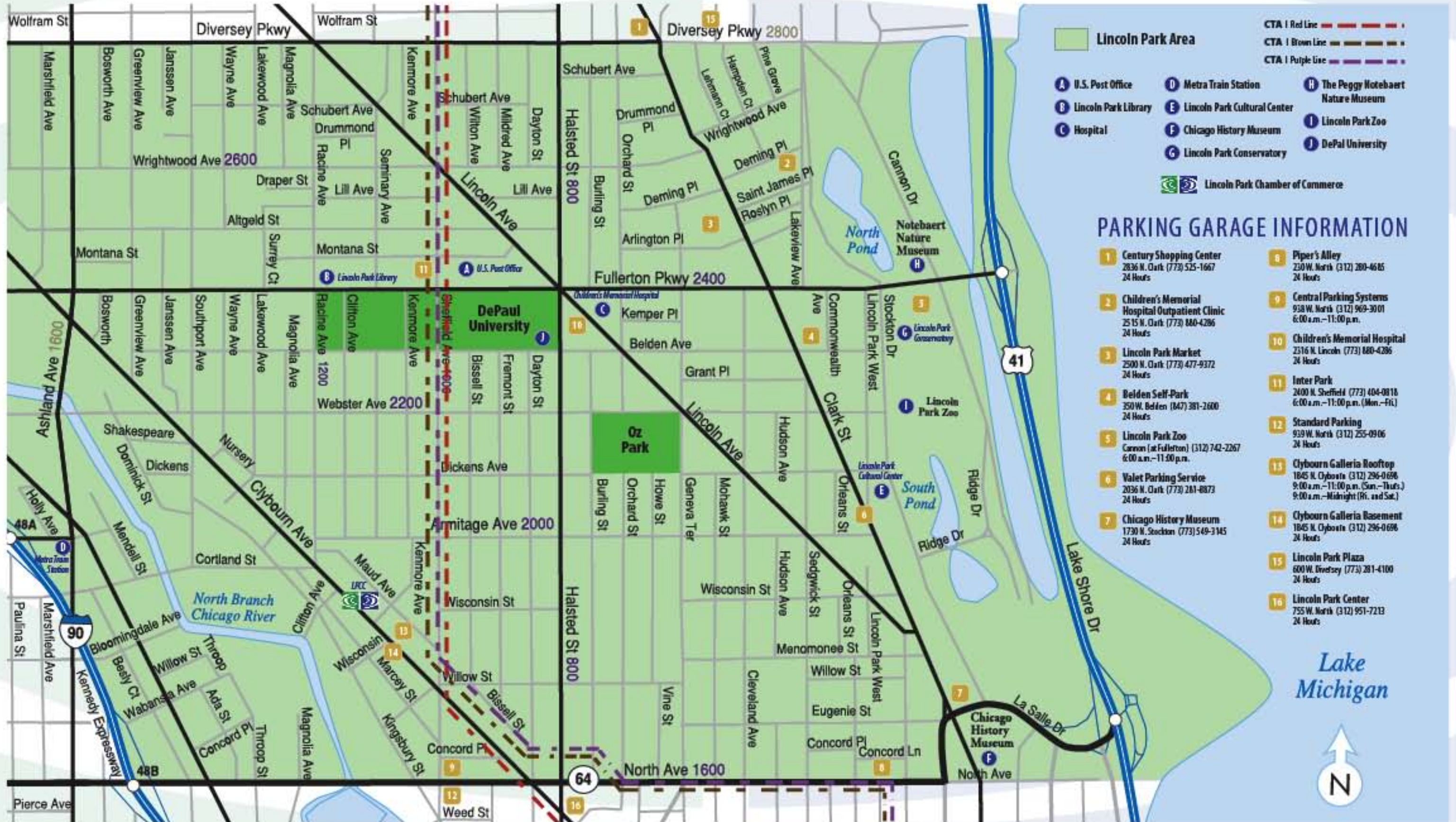
Business | Health | Disability | Auto






2538 North Lincoln Avenue
Chicago, IL 60614
P. 773.871.0808 ~ F. 773.871.2976
www.serpeinsurance.com

LINCOLN PARK AREA MAP



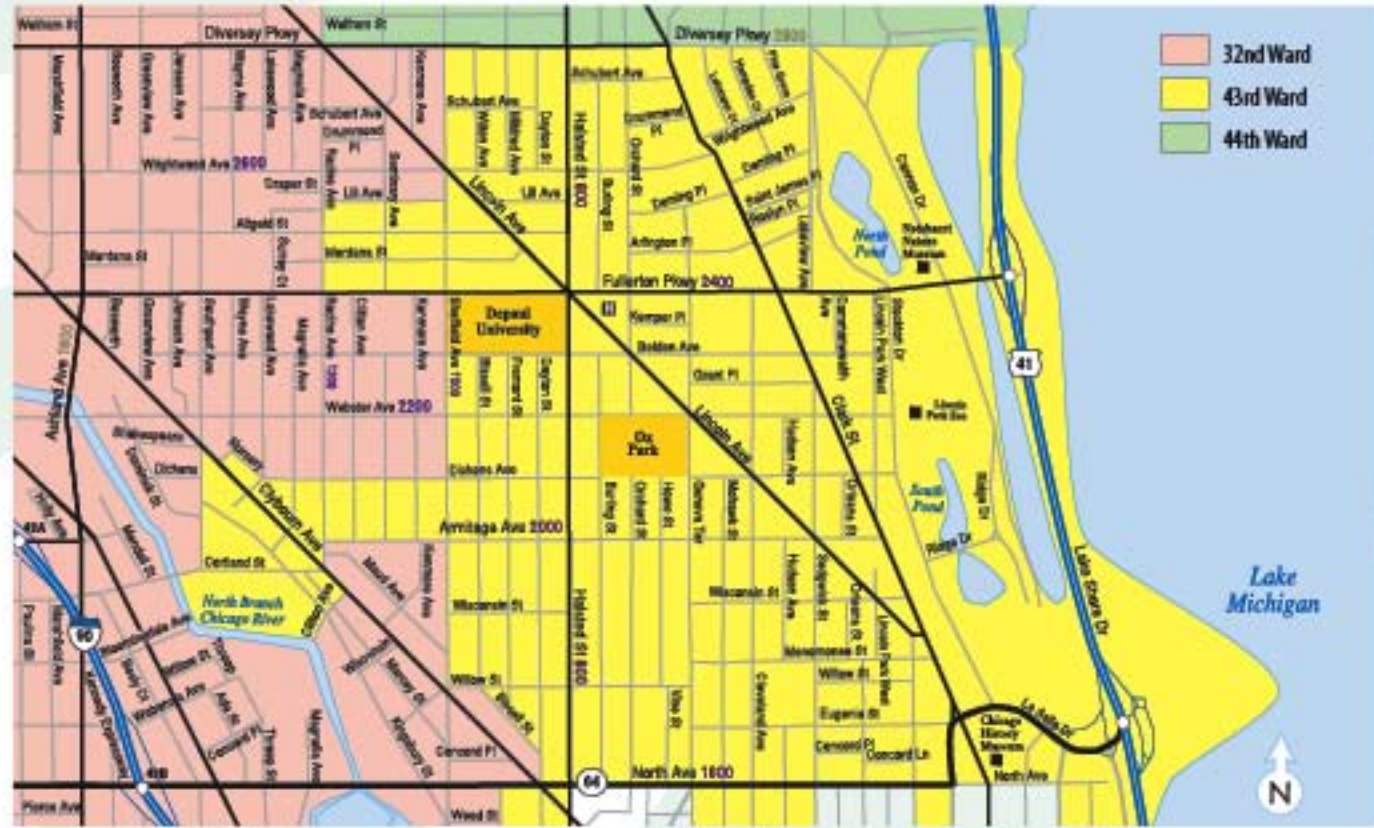
- Lincoln Park Area**
- CTA | Red Line
 - CTA | Brown Line
 - CTA | Purple Line
- A** U.S. Post Office
 - B** Lincoln Park Library
 - C** Hospital
 - D** Metra Train Station
 - E** Lincoln Park Cultural Center
 - F** Chicago History Museum
 - G** Lincoln Park Conservatory
 - H** The Peggy Notebaert Nature Museum
 - I** Lincoln Park Zoo
 - J** DePaul University
- Lincoln Park Chamber of Commerce

PARKING GARAGE INFORMATION

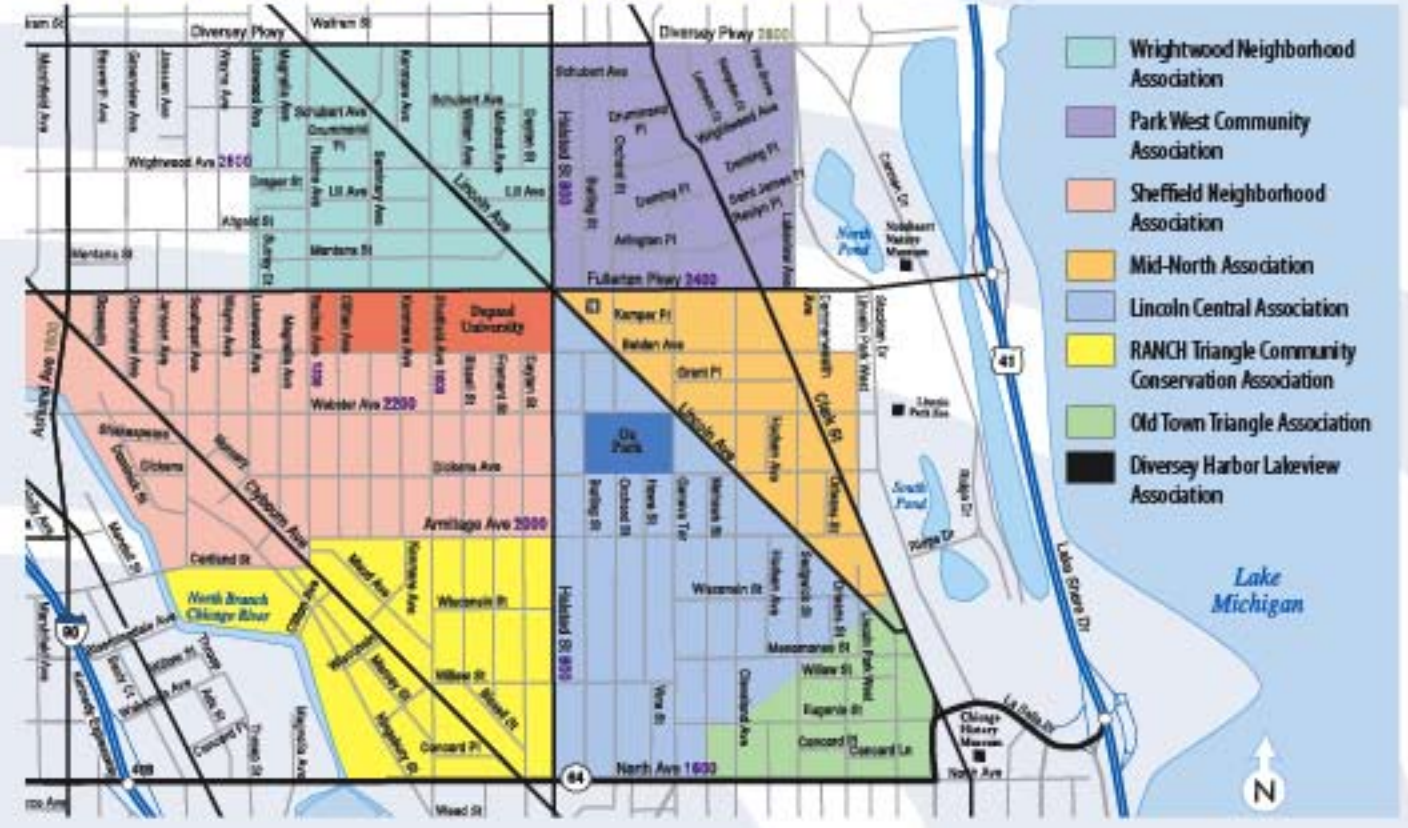
- 1** Century Shopping Center
2836 N. Clark (773) 525-1667
24 Hours
- 2** Children's Memorial Hospital Outpatient Clinic
2515 N. Clark (773) 880-4286
24 Hours
- 3** Lincoln Park Market
2500 N. Clark (773) 477-9372
24 Hours
- 4** Belden Self-Park
350 W. Belden (847) 381-2600
24 Hours
- 5** Lincoln Park Zoo
Cannon (at Fullerton) (312) 742-2267
6:00 a.m. - 11:00 p.m.
- 6** Valet Parking Service
2036 N. Clark (773) 281-8873
24 Hours
- 7** Chicago History Museum
1730 N. Stockton (773) 549-3145
24 Hours
- 8** Piper's Alley
230 W. North (312) 280-4685
24 Hours
- 9** Central Parking Systems
938 W. North (312) 969-3001
6:00 a.m. - 11:00 p.m.
- 10** Children's Memorial Hospital
2316 N. Lincoln (773) 880-4286
24 Hours
- 11** Inter Park
2400 N. Sheffield (773) 404-0818
6:00 a.m. - 11:00 p.m. (Mon.-Fri.)
- 12** Standard Parking
939 W. North (312) 255-0906
24 Hours
- 13** Clybourn Galleria Rooftop
1845 N. Clybourn (312) 296-0698
9:00 a.m. - 11:00 p.m. (Sun.-Thurs.)
9:00 a.m. - Midnight (Fri. and Sat.)
- 14** Clybourn Galleria Basement
1845 N. Clybourn (312) 296-0698
24 Hours
- 15** Lincoln Park Plaza
600 W. Diversey (773) 281-4100
24 Hours
- 16** Lincoln Park Center
755 W. North (312) 951-7213
24 Hours



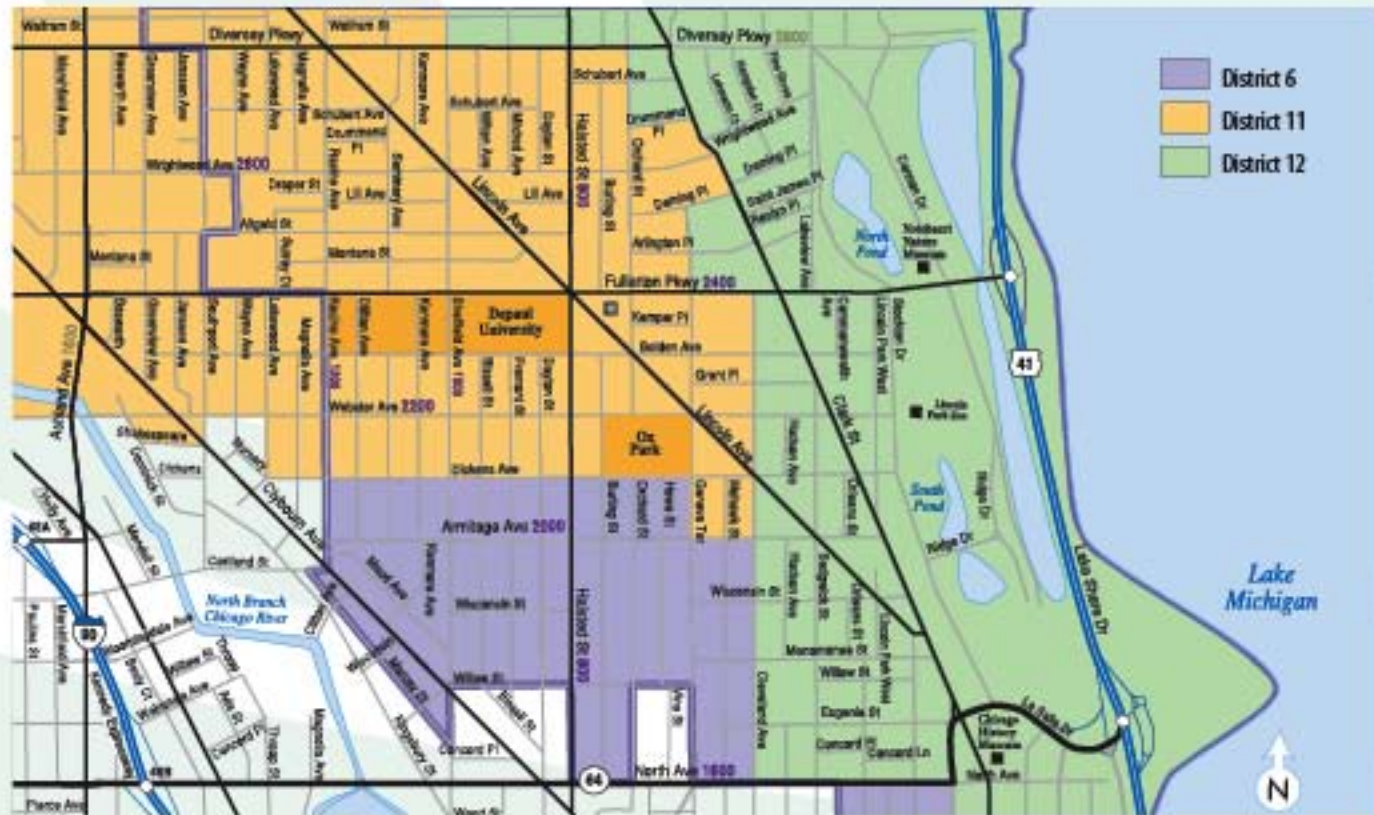
ALDERMANIC WARDS



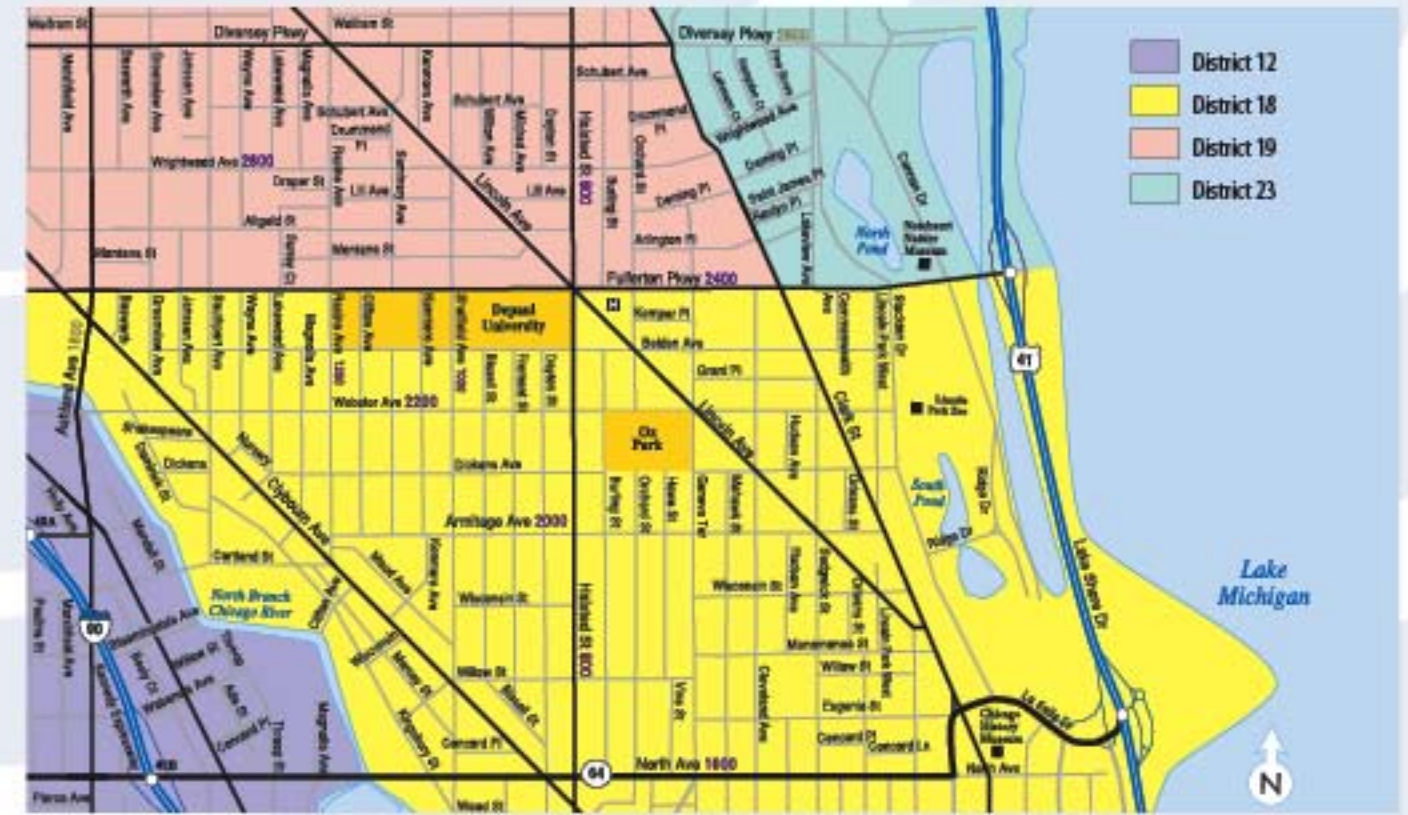
NEIGHBORHOOD ASSOCIATIONS



ILLINOIS LEGISLATIVE DISTRICTS



POLICE DISTRICTS





ENJOYING THE AREA

WELCOME TO LINCOLN PARK

With its renowned cultural institutions, world class restaurants, respected theatre and entertainment venues, premiere shopping, anchor institutions, quaint and friendly neighborhood streets and exceptional lakefront park and activities, Lincoln Park represents the quintessential Chicago neighborhood destination. Chicago is a city of neighborhoods, someone once said, and that message is our mantra in Lincoln Park.

Lincoln Park provides visitors an exciting opportunity to explore more of what makes Chicago the great city it is today. Your morning, afternoon and night can be as busy or relaxing as you would like. From quiet cafes and bistros to celebratory nightlife and bustling streets, Lincoln Park's entertainment opportunities meet the needs of any type of visitor. Spend an hour, a day or a week in Lincoln Park and begin exploring the treasures the community has to offer!

Discover Lincoln Park today!

CULTURAL INSTITUTIONS

CHICAGO HISTORY MUSEUM*

1601 N. Clark • (312) 642-4600 • www.chicagohistory.org

Get lost in Chicago's past at this major museum and research center devoted to Chicago and American history. You will experience the past and gain new perspectives on the present through a wide variety of exhibits and programs. Founded in 1856, the Chicago History Museum cares for, showcases and interprets millions of authentic pieces of Chicago and U.S. History. Explore the museum's main collection areas, including: architecture; archives and manuscripts; books and other published materials; costumes; decorative and industrial arts; oral history; film and video; paintings and sculpture; and prints and photographs.

The Chicago History Museum features a complete Museum Store, the North & Clark Café, and galleries and exhibitions renovated in 2005 and 2006. Be sure to discover the city's vast history in Chicago: Crossroads of America which highlights the city's changing economy, challenging crises, diverse neighborhoods, groundbreaking innovations, lively cultural scene and more. In early 2011, the Chicago History Museum continued their celebration of the 200th birthday of President Abraham Lincoln with an in depth look at the effect of the Civil War in Chicago's development and people.

The Chicago History Museum is open Monday through Saturday from 9:30 a.m. to 4:30 p.m. and Sundays from 12:00 p.m. to 5:00 p.m.

Insider tip: The museum is open for free on Mondays.

Be sure to visit their website for details on pricing, current exhibitions and more information.

LINCOLN PARK CONSERVATORY

2391 N. Stockton • (312) 742-7736 • www.chicagoparkdistrict.com

Ranking among the finest in the horticultural world, the Lincoln Park Conservatory displays exotic palms, orchids and ferns in four glass buildings alongside three acres of magnificent outdoor gardens. Once little more than a greenhouse, the Lincoln Park Conservatory was built in phases between 1890 and 1895 and now features four display houses: the Palm House, the Fern Room, Orchid House and Show House. Built by nationally-renowned architect Joseph Lyman Silsbee in collaboration with M.E. Bell, the facility was constructed to showcase exotic plants as well as to

grow the plants needed for Chicago's expanding parks system. No matter what the weather may be outside the Conservatory, you can be sure that inside is always green and lush.

Insider tip: Skip Chicago's harsh winter weather as you stroll through the temperate climate.

The Lincoln Park Conservatory is open 365 days a year from 9:00 a.m. to 5:00 p.m. and admission is free of charge.

LINCOLN PARK CULTURAL CENTER

2045 N. Lincoln Park West • (312) 742-7726 • www.chicagoparkdistrict.com

The Lincoln Park Cultural Center offers Chicagoans of all ages a wide variety of cultural and recreational programming, as well as special events throughout the year. The Lincoln Park Cultural Center boasts a lapidary and stained glass shop, ceramics studio, game room, auditorium, dance studio, full service woodshop and an early childhood center.

Please visit the Lincoln Park Cultural Center's website for information on classes, studio facilities and hours.



LINCOLN PARK ZOO*

2200 N. Cannon • (312) 742-2000 • www.lpzoo.org

A treasured oasis in the heart of Chicago and one of our neighborhood's most popular anchors, Lincoln Park Zoo is home to more than 1,300 animals, many of them threatened or endangered. Every year, millions of visitors come to the Lincoln Park Zoo to learn more about the natural world around them, and across the globe. Zoo animals include penguins, giraffes, rhinos, polar bears, lions, tigers, seals, flamingos, bats, gorillas, zebras and more.

In June 2010, the Lincoln Park Zoo opened the Nature Boardwalk to serve as an educational environment. Magnificent skyline views welcome guests while they learn more about the delicate ecosystem that supports and promotes local wildlife.

Lincoln Park Zoo is open 365 days a year, 9:00 a.m. to 5:00 p.m. and is always free of charge.

Insider tip: Check the schedule for daily programs and events happening at the Lincoln Park Zoo to connect even further with the wild animals.

THE PEGGY NOTEBAERT NATURE MUSEUM*

2430 N. Cannon • (773) 755-5100 • www.naturemuseum.org

Opened in 1999 by the Chicago Academy of the Sciences, The Peggy Notebaert Nature Museum offers a unique venue for the public – especially urban dwellers – to find new ways to reconnect with the natural world. Stand spellbound as a just-emerged butterfly sees the world outside its chrysalis for the very first time. Squish through wetlands discovering why they are beautiful and important. Discover the power and mystery of rivers. Grab your field journal and your sense of adventure — you are about to take a journey into the secret world of the amazing creatures that inhabit our planet.

The museum features the region's only year-round butterfly exhibit featuring 75 different species of butterflies. The facility is eco-friendly as well, with a green roof, solar panels, natural light sources and native landscaping. The Peggy Notebaert Nature Museum also becomes the winter home for the city's famous Green City Market.

The Peggy Notebaert Nature Museum is open Monday through Friday 9:00 a.m. to 4:30 p.m. and Saturday and Sunday from 10:00 a.m. to 5:00 p.m.

Be sure to visit their website for details on pricing, exhibitions and more information.

Insider tip: Don't miss Thursdays at the Nature Museum when the entry fee is waived.

* Denotes LPCC Member

For more information, contact these cultural institutions directly or visit their websites.

Source: Cultural institution websites (listed above)

*Loose Diamonds • Engagement Rings
Repurposing Old Jewelry • Repairs • Purchase Fine Metals*

K. STONEHILL CREATIONS
Specializing in Custom Jewelry Design

1739 N. Clybourn Avenue
Chicago IL 60614
Ph – 312-265-0582
www.kstonehillcreations.com

AWARD-WINNING HOTEL!

Free Wi-Fi throughout the Hotel!
Complimentary Deluxe Continental Breakfast and USA Today
Free access to Bally's Health Club
Modern Meeting Room
Convenient Valet Parking
Walk to Wrigley Field, Lincoln Park Zoo, dining, shopping, and theaters
Minutes from the Chicago Loop, Magnificent Mile, Navy Pier, and McCormick Place

www.daysinnchicago.net

Days Inn CHICAGO

644 W. Diversey Parkway
Chicago IL 60614
773-525-7010 | 888-LPN-DAYS